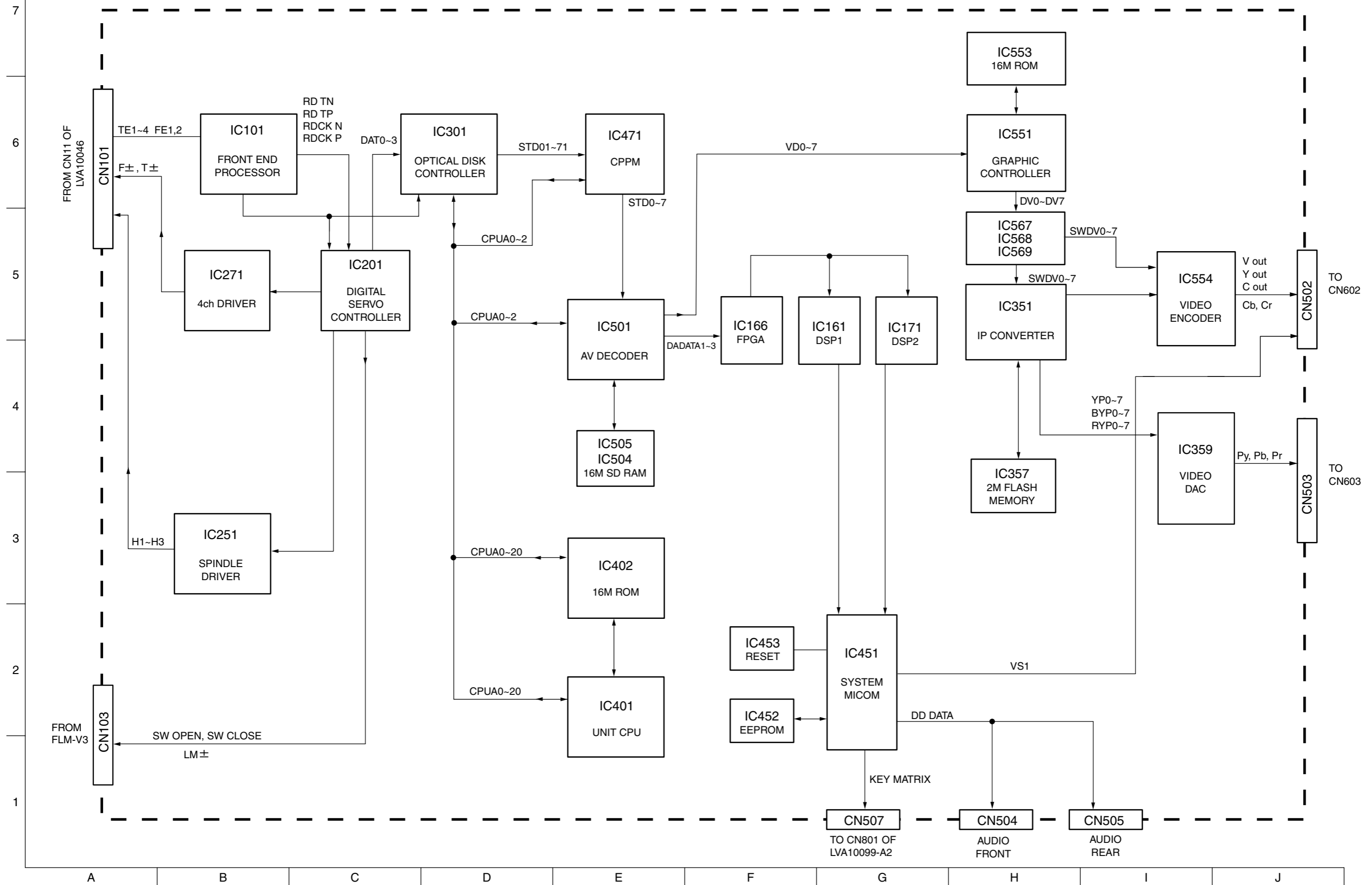
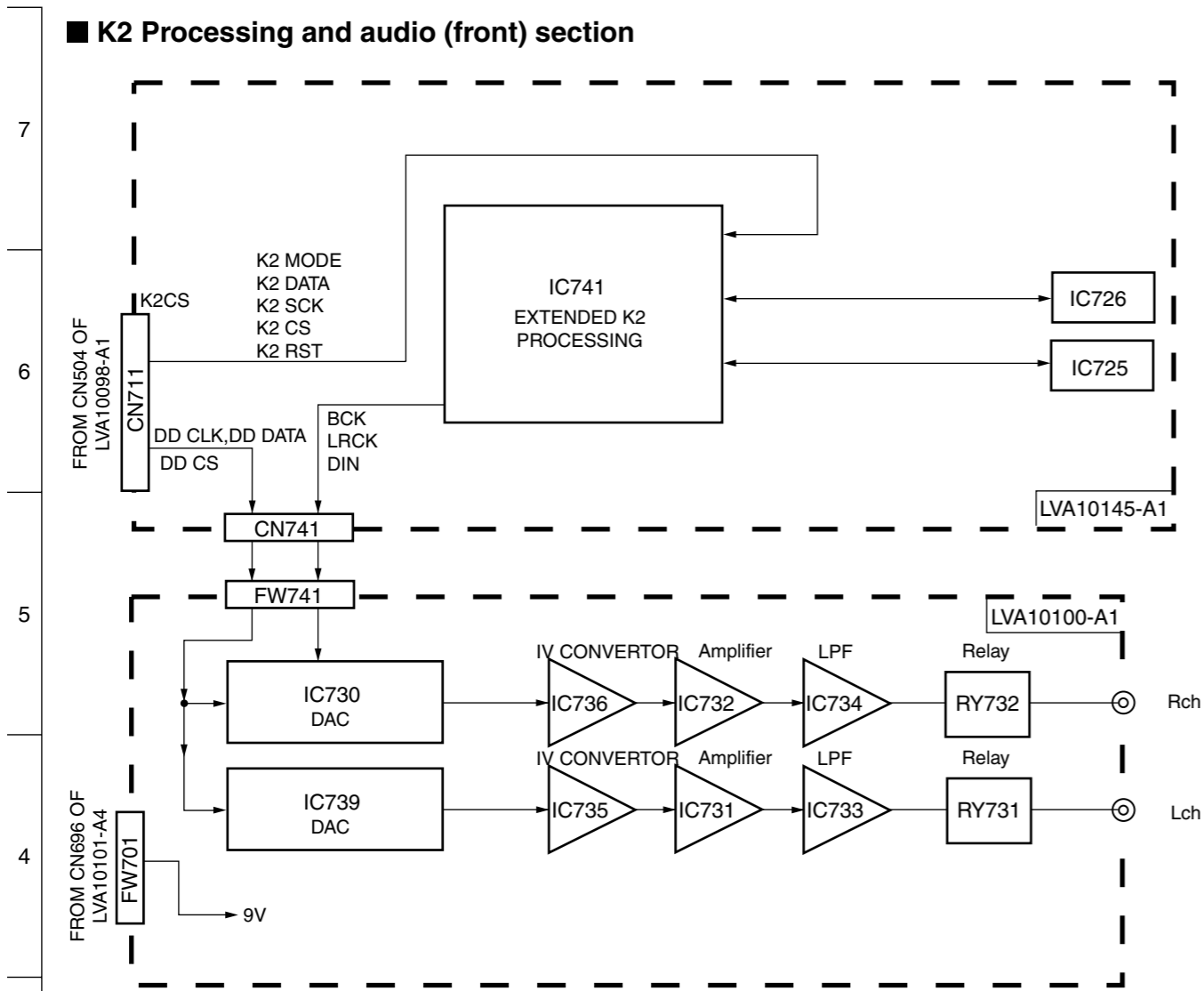


Block diagrams

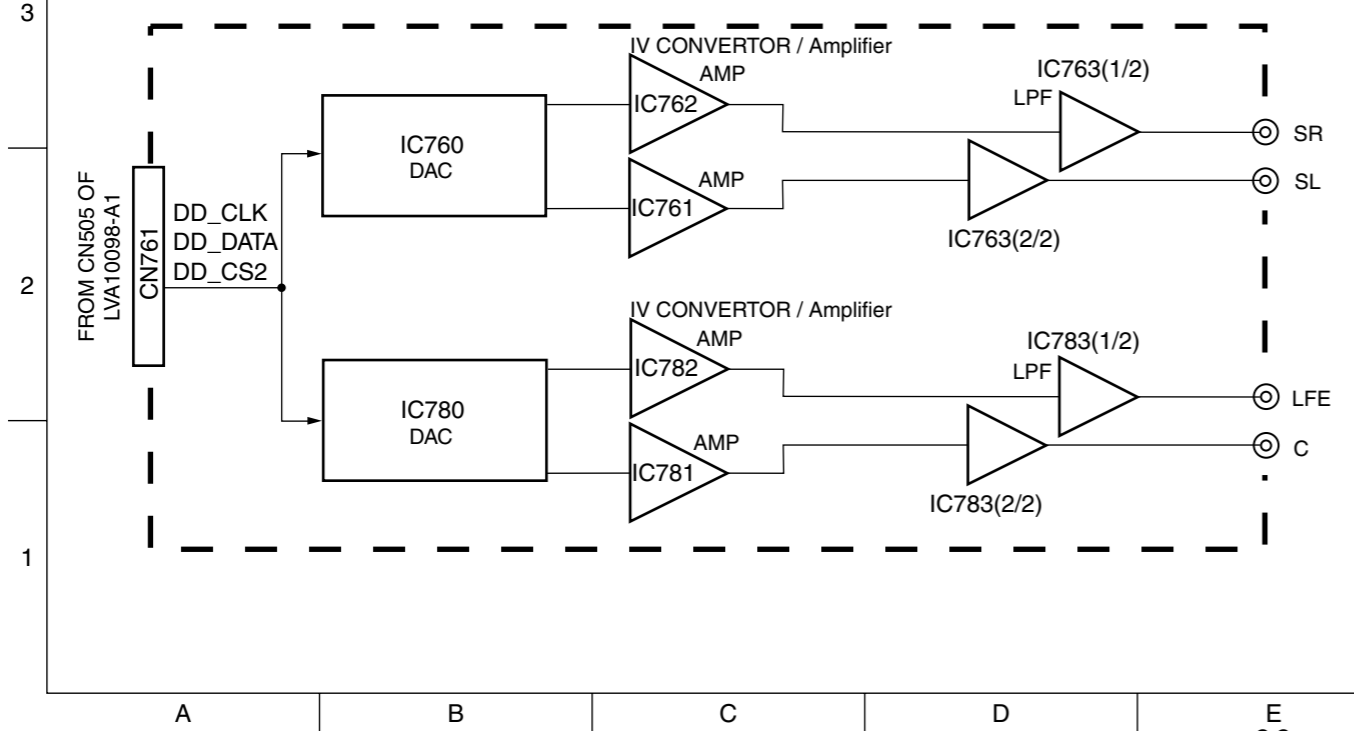
■ Main section



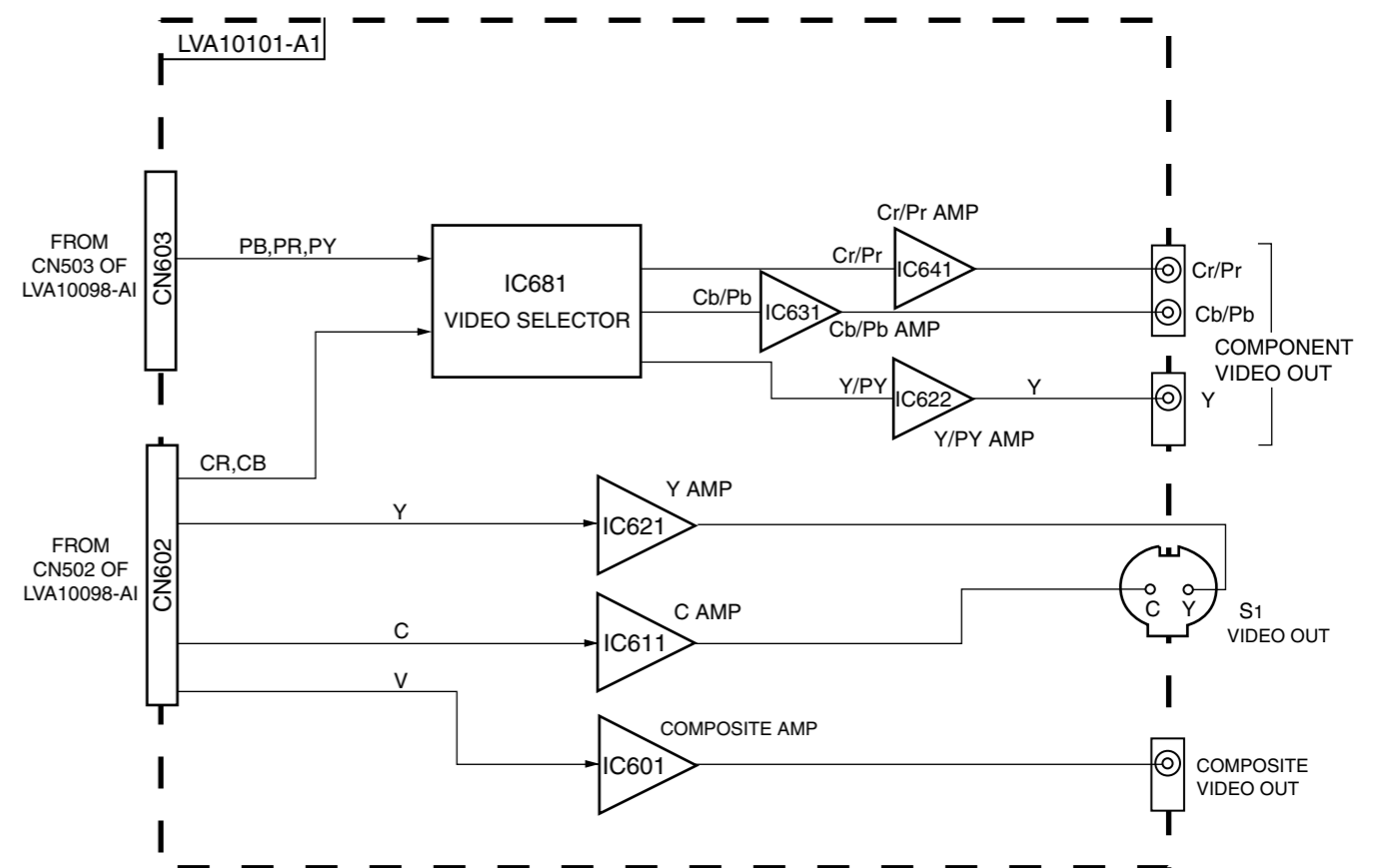
K2 Processing and audio (front) section



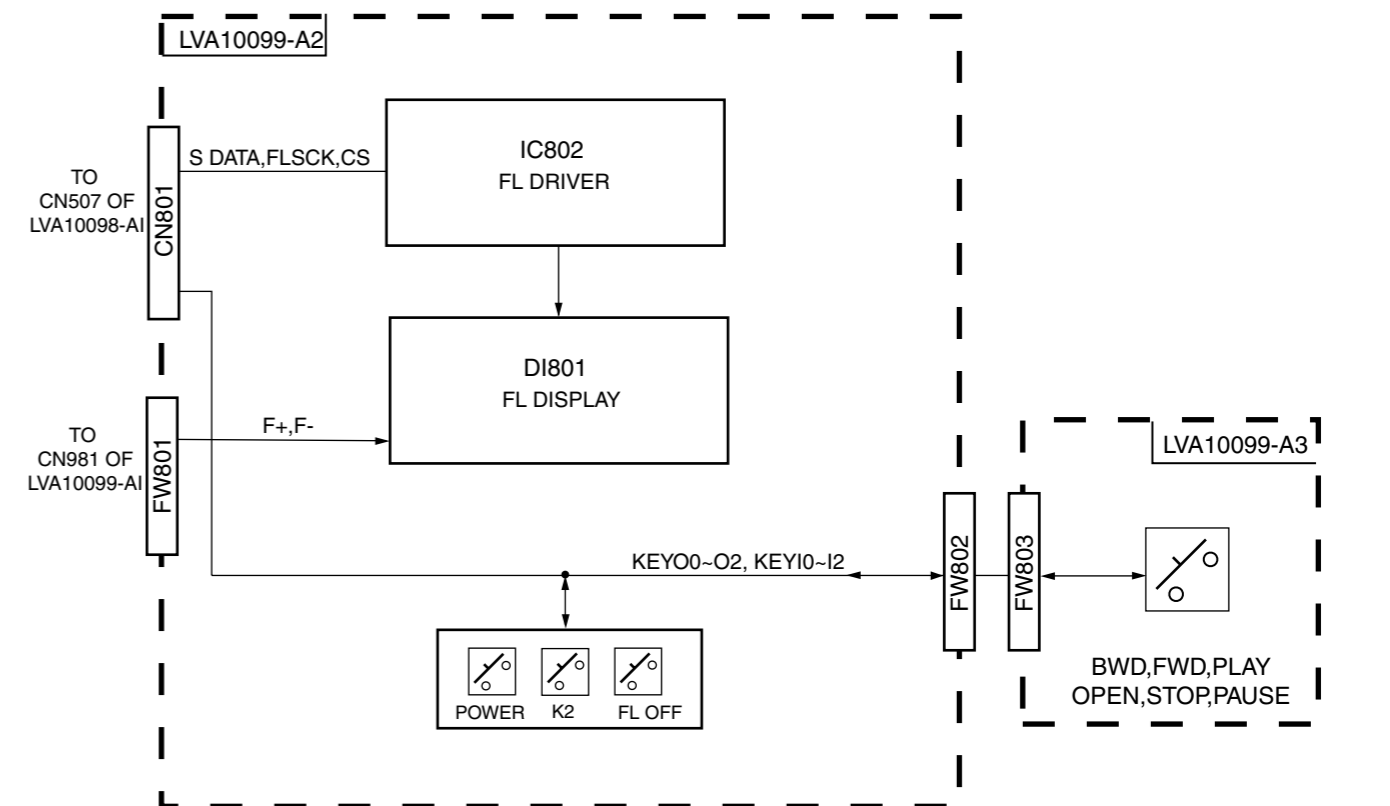
Audio (rear,center,sub woofer) section



Video signal section



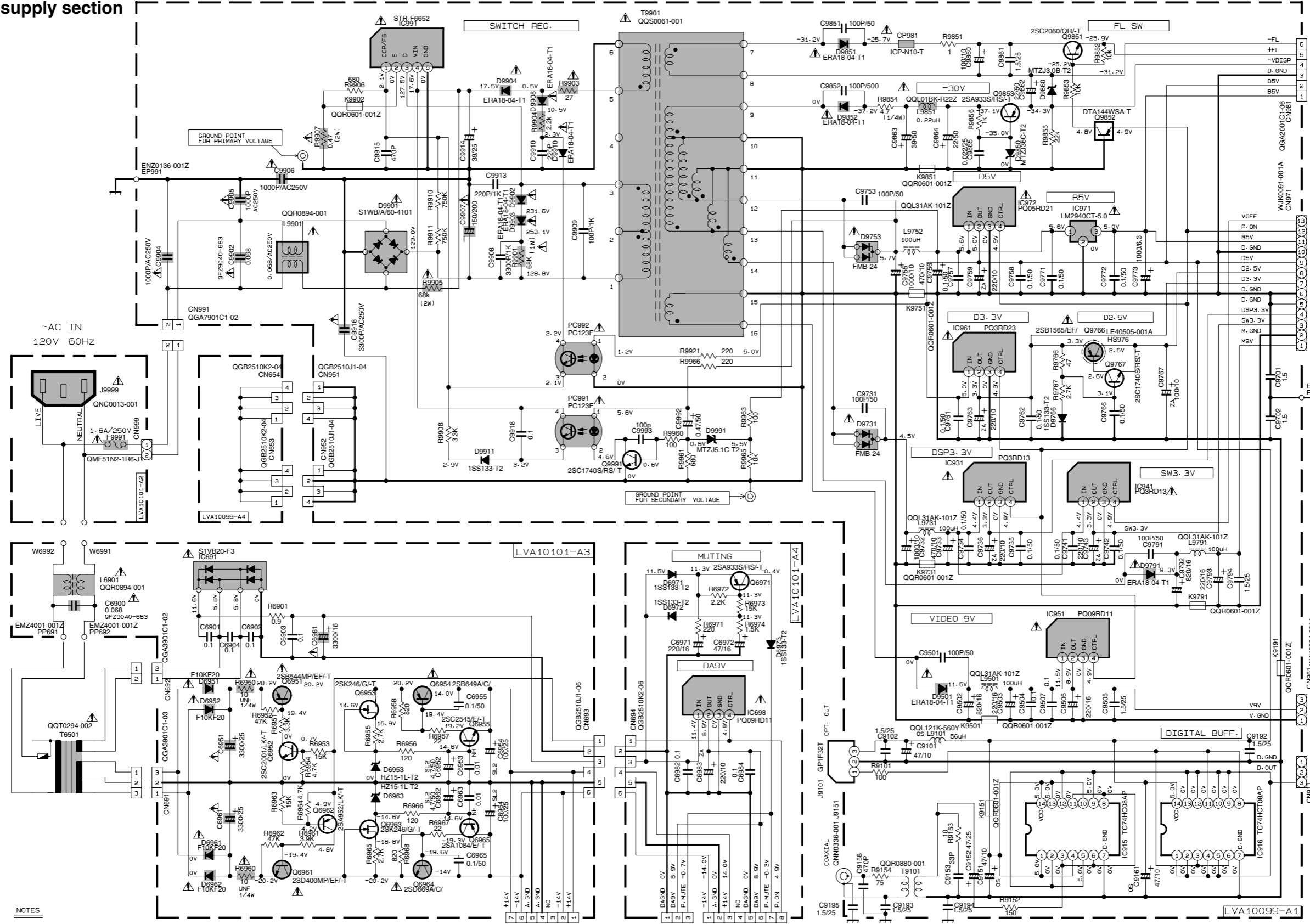
FL Display section



Standard schematic diagrams

Power supply section

7
6
5
4
3
2
1



NOTES

- VOLTAGES ARE DC-MEASURED WITH A DIGITAL VOLT METER WITHOUT INPUT SIGNAL. CONDITION --- DVD STOP MODE.
- UNLESS OTHERWISE SPECIFIED.
 - ALL RESISTORS ARE 1/4W ±5% CARBON RESISTOR.
 - ALL RESISTANCE VALUES ARE IN OHM(Ω).
 - ALL CAPACITANCE VALUES ARE IN μF(P=PF).
 - ALL E-CAPACITORS ARE SHOWN IN THE FORM OF CAPACITANCE(μF)/RATED VOLTAGE (V).
 - ALL INDUCTANCE VALUES ARE IN μH(m=MH).

UNFRAMMABLE CARBON RESISTOR
 METAL FILM RESISTOR
 OXIDE METAL FILM RESISTOR

TO FW731 & FW732
 OF LVA10100-A1
 (SHEET 4/10)

TO FW701 OF
 LVA10100-A1
 (SHEET 4/10)

TO FW751 OF
 LVA10100-A2
 (SHEET 5/10)

Parts are safety assurance parts.
 When replacing those parts make
 sure to use the specified one.

SHEET 1/10

MODEL XV-D9000 J

TO FW801 OF
 LVA10099-A2
 (SHEET 2/10)

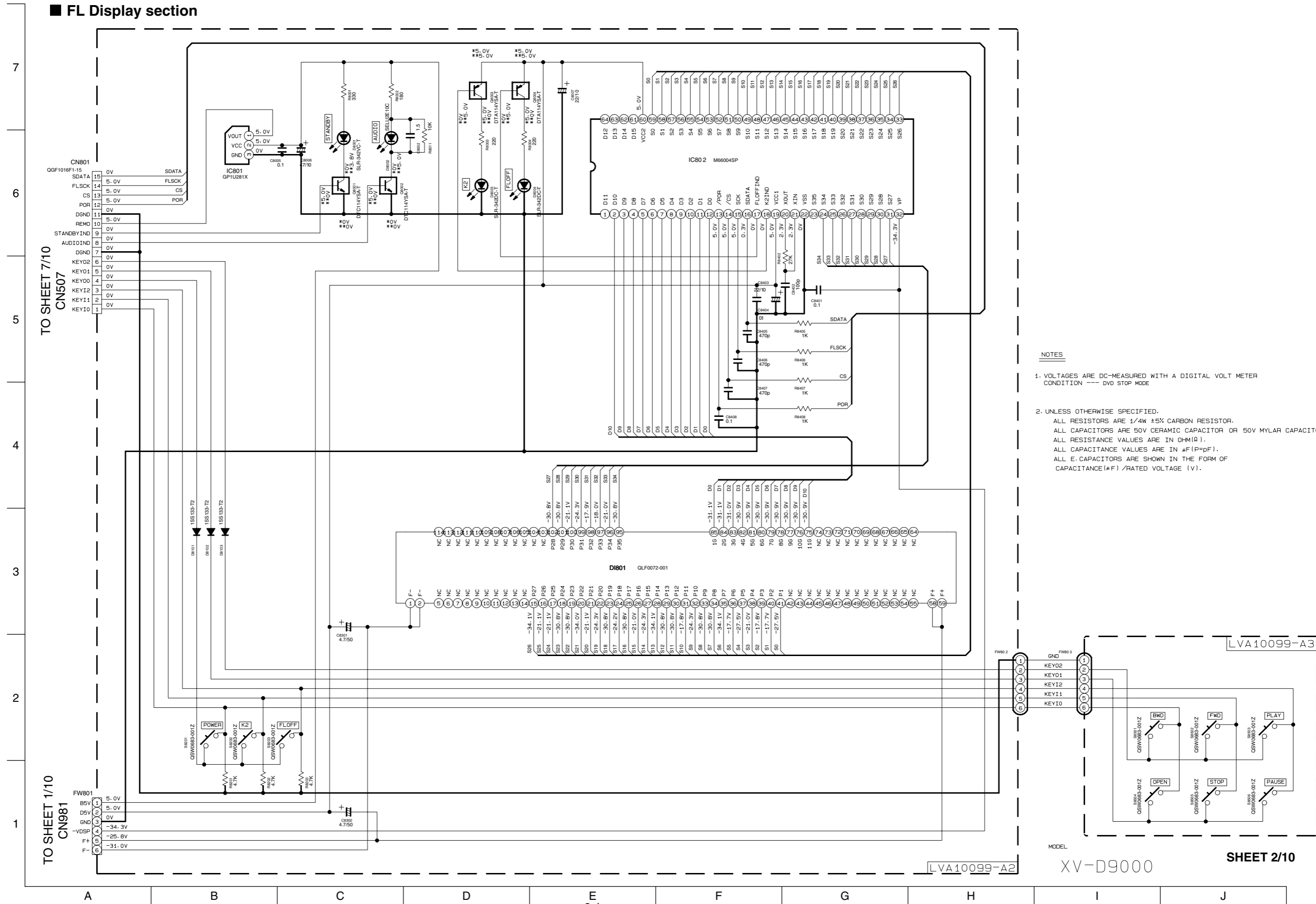
TO CN501 OF
 LVA10098-A1
 (SHEET 6/10)

TO CN601 OF
 LVA10101-A1
 (SEET 3/10)

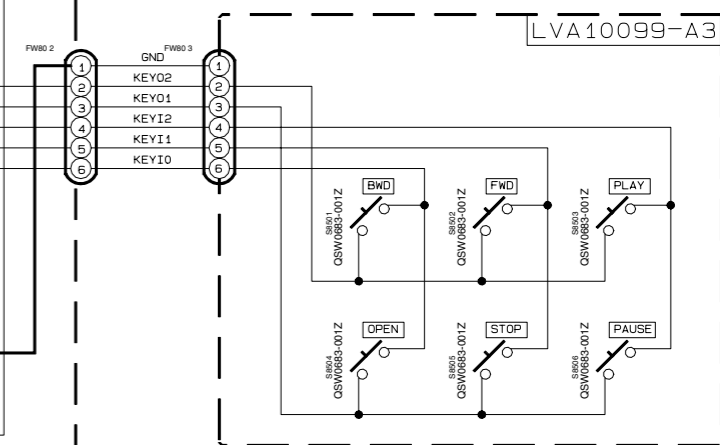
TO FW872 OF
 LVA10098-A1
 (SHEET 8/10)

A B C D E F G H I J

FL Display section

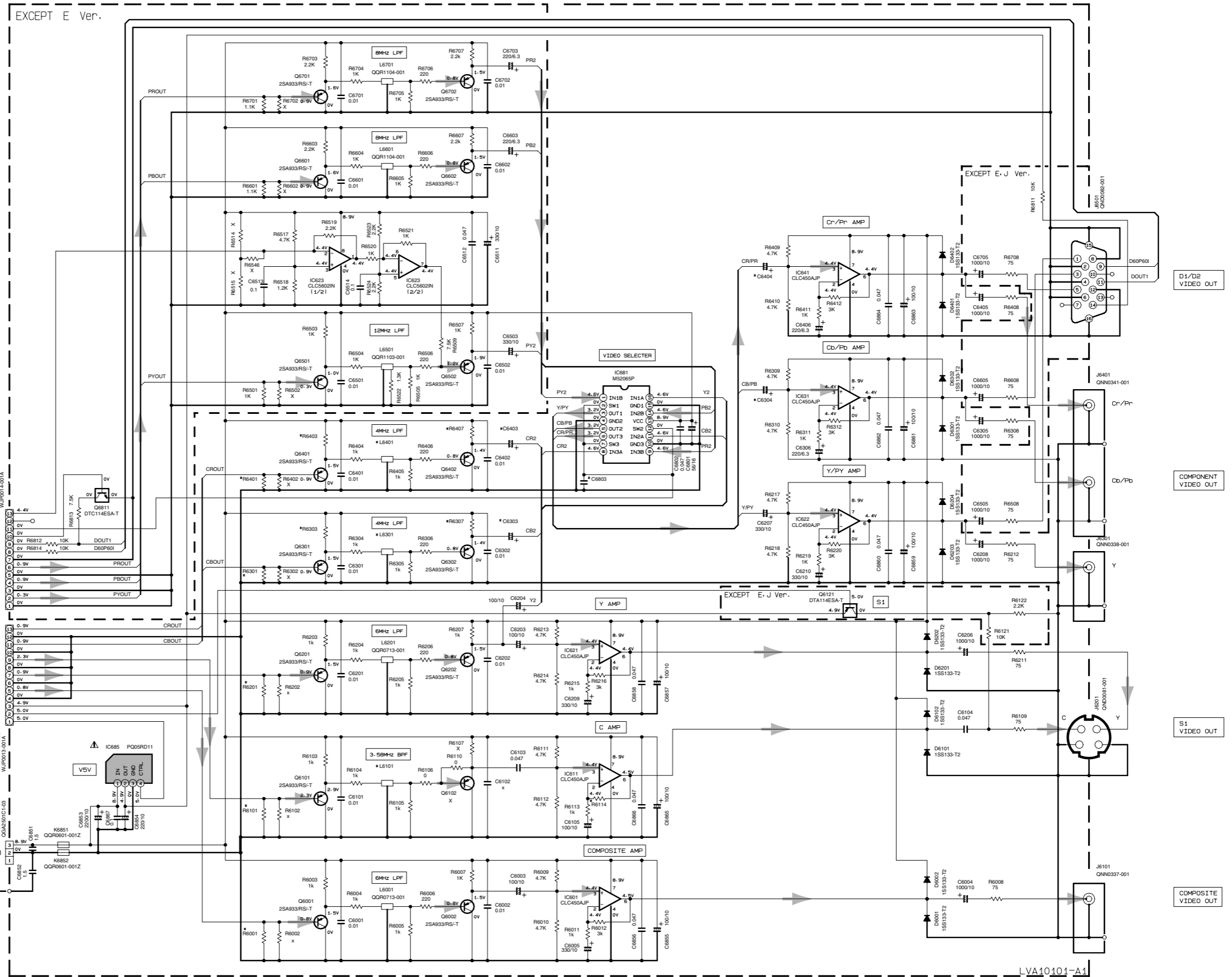


- NOTES**
- VOLTAGES ARE DC-MEASURED WITH A DIGITAL VOLT METER CONDITION --- DVD STOP MODE
 - UNLESS OTHERWISE SPECIFIED.
 ALL RESISTORS ARE 1/4W ±5% CARBON RESISTOR.
 ALL CAPACITORS ARE 50V CERAMIC CAPACITOR OR 50V MYLAR CAPACITOR.
 ALL RESISTANCE VALUES ARE IN OHM(Ω).
 ALL CAPACITANCE VALUES ARE IN #F(P=PF).
 ALL E. CAPACITORS ARE SHOWN IN THE FORM OF CAPACITANCE(#F)/RATED VOLTAGE (V).



Video signal section

REF.	Ver.	E	D/J
*L6101	QQR0783-001	QQR0714-001	
*L6301	QQR0713-001	QQR0712-001	
*L6401	QQR0713-001	QQR0712-001	
*C6803	SHORT (B6803)	1.5	
*R6001	1.5K	1.1K	
*R6101	4.7K	3.3K	
*R6201	2.2K	1.2K	
*R6301	2.2K	750	
*R6401	2.2K	750	
*R6114	4.3K	3.9K	
*R6303	1K	2.2K	
*R6403	1K	2.2K	
*R6307	1K	2.2K	
*R6407	1K	2.2K	
*C6303	100/10	27/35	
*C6403	100/10	27/35	
*C6304	330/10	220/6.3	
*C6404	330/10	220/6.3	



TO CN503 OF LVA10098-A1 SHEET 9/10

TO CN502 OF LVA10098-A1 SHEET 9/10

TO CN961 OF LVA10099-A1 SHEET 1/10

NOTES

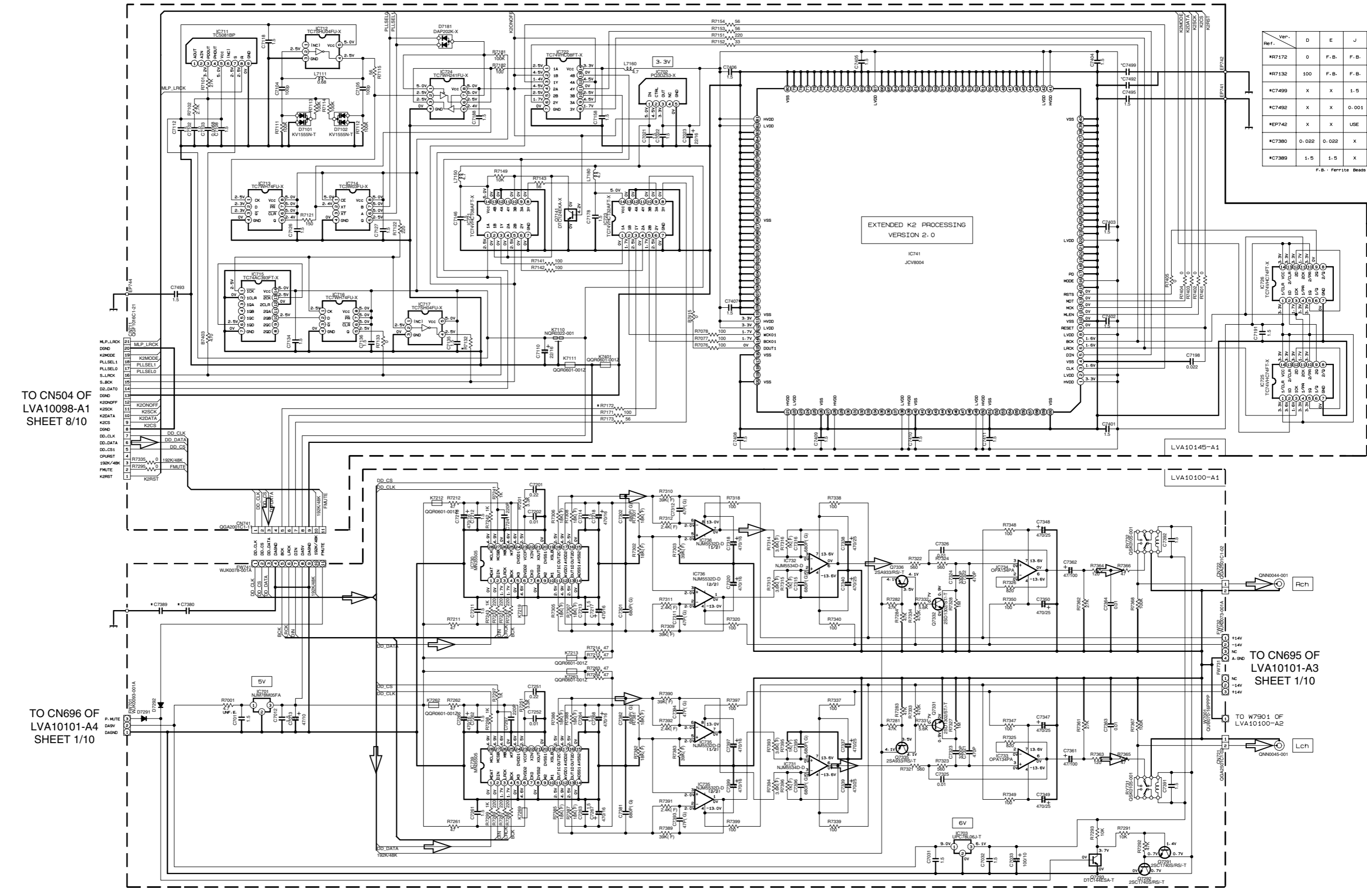
- VOLTAGES ARE DC-MEASURED WITH A DIGITAL VOLT METER CONDITION - DIO STOP MODE
- UNLESS OTHERWISE SPECIFIED, ALL RESISTORS ARE 1/4W ±5% CARBON RESISTOR. ALL RESISTANCE VALUES ARE IN Ω(K)(M).
- ALL CAPACITANCE VALUES ARE IN μF(PμF).
- ALL E-CAPACITORS ARE SHOWN IN THE FORM OF CAPACITANCE(F)/RATED VOLTAGE (V).

Parts are safety assurance parts. When replacing those parts make sure to use the specified one.

Video signal → MODEL XV-D9000 SHEET 3/10

■ K2 Processing and audio (front) section

7
6
5
4
3
2
1



Ref.	Ver.	D	E	J
*R7172	0	F.B.	F.B.	
*R7132	100	F.B.	F.B.	
*C7499	X	X	1.5	
*C7492	X	X	0.001	
*EP742	X	X	USE	
*C7360	0.022	0.022	X	
*C7369	1.5	1.5	X	

F.B. = Ferrite Beads

TO CN504 OF LVA10098-A1 SHEET 8/10

TO CN696 OF LVA10101-A4 SHEET 1/10

TO CN695 OF LVA10101-A3 SHEET 1/10

TO W7901 OF LVA10100-A2

- NOTES
1. VOLTAGES ARE DC-MEASURED WITH A DIGITAL VOLT METER WITHOUT INPUT SIGNAL. CONDITION --- DVD STOP MODE
 2. UNLESS OTHERWISE SPECIFIED, ALL RESISTORS ARE 1% CARBON RESISTOR. (EXCEPT (F) CAPACITORS) ALL RESISTANCE VALUES ARE IN OHMS (Ω). ALL CAPACITANCE VALUES ARE IN #P(P#F). ALL E-CAPACITORS ARE SHOWN IN THE FORM OF CAPACITANCE(#P)/RATED VOLTAGE (V). ALL DIODES ARE 1SS133
 3. (F) RESISTORS ARE *METAL FILM RESISTOR*.
 4. (G) CAPACITORS ARE *POLYPROPYLENE FILM CAPACITOR*.

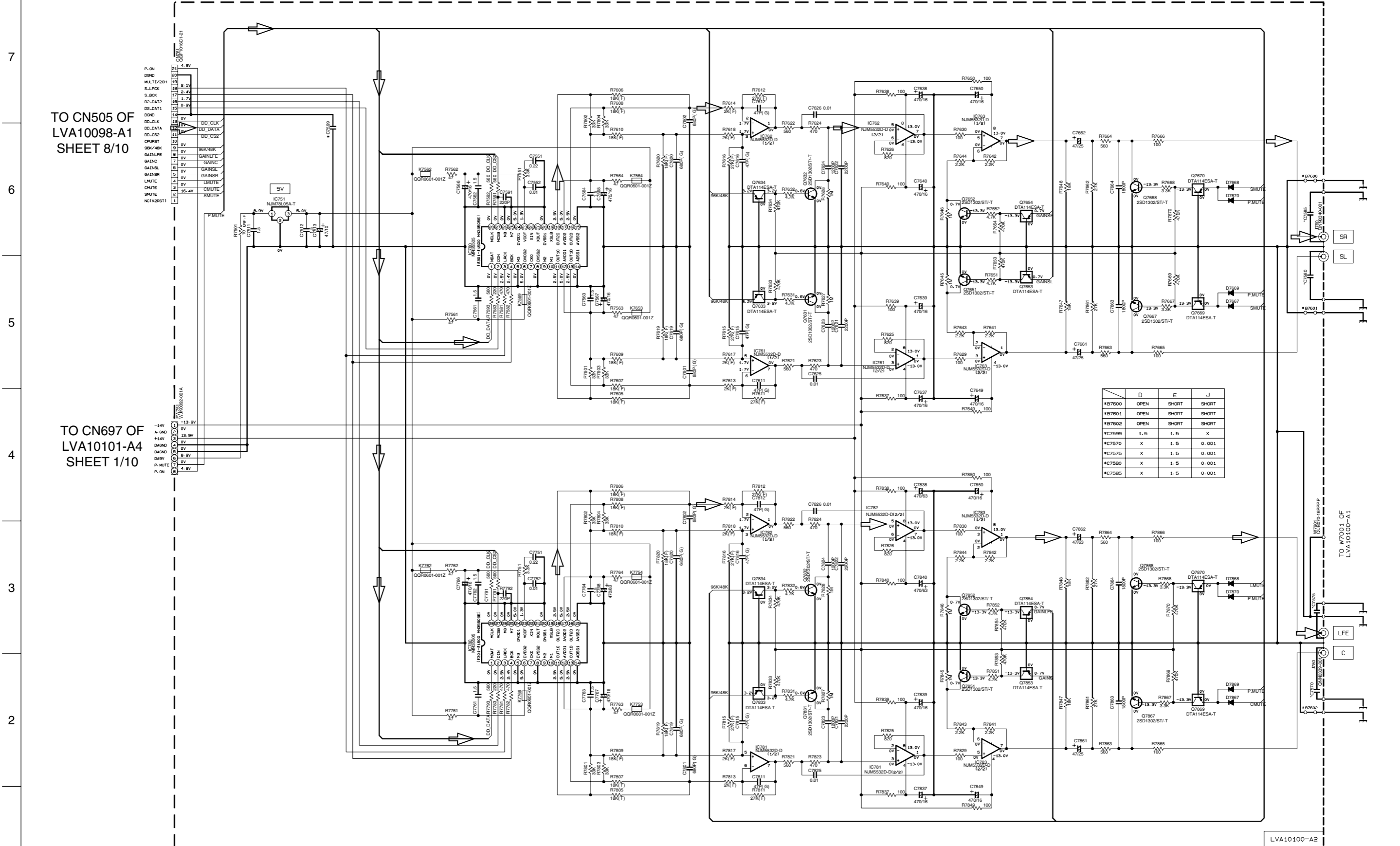
➤ Audio signal

MODEL XV-D9000 SHEET 4/10

AUDIO FRONT

A B C D E F G H I J

Audio (rear,center.sub woofer) section



	D	E	J
*B7600	OPEN	SHORT	SHORT
*B7601	OPEN	SHORT	SHORT
*B7602	OPEN	SHORT	SHORT
*C7599	1.5	1.5	X
*C7570	X	1.5	0.001
*C7575	X	1.5	0.001
*C7580	X	1.5	0.001
*C7585	X	1.5	0.001

NOTES
 1. VOLTAGES ARE DC-MEASURED WITH A DIGITAL VOLT METER WITHOUT INPUT SIGNAL. CONDITION --- DVD PLAY MODE
 2. UNLESS OTHERWISE SPECIFIED, ALL RESISTORS ARE 1/4W ±5% CARBON RESISTOR. (EXCEPT(F) CAPACITORS) ALL RESISTANCE VALUES ARE IN OHM(Ω). ALL CAPACITANCE VALUES ARE IN pF(pF). ALL E-CAPACITORS ARE SHOWN IN THE FORM OF CAPACITANCE(pF)/RATED VOLTAGE (V). ALL DIODES ARE 1SS133
 3. IF RESISTORS ARE "METAL FILM RESISTOR".
 4. IF CAPACITORS ARE "POLYPROPYLENE FILM CAPACITOR".
 ~~~~ UNFRAMMABLE CARBON RESISTOR

Audio signal

AUDIO SURROUND

MODEL XV-D9000

SHEET 5/10

DVD Servo control section

| REF   | VAL | D | E | J    |
|-------|-----|---|---|------|
| HR151 | 0   | 0 | 0 | F.B. |
| HR152 | 0   | 0 | 0 | F.B. |
| HR153 | 0   | 0 | 0 | F.B. |
| HR154 | 0   | 0 | 0 | F.B. |

F.B.: Ferrite Beads

FROM CN11 OF LVA10046 SHEET 10/10

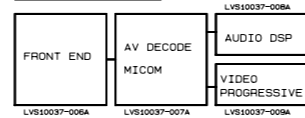
FROM FLM-V3

FROM CN971 OF LVA10099-A1 SHEET 1/10

OGA2001C2-13X CN901

LVA10098-A1

XV-D9000 MAIN P.W.B



NOTES

- VOLTAGES ARE DC-MEASURED WITH A DIGITAL VOLT METER
- CONDENSATOR --- 50V RIPP MIDE
- UNLESS OTHERWISE SPECIFIED:
- ALL RESISTORS ARE 50V ORGANIC CAPACITOR OR 50V MYLAR CAPACITOR.
- ALL RESISTANCE VALUES ARE IN OHMS(Ω).
- ALL CAPACITANCE VALUES ARE IN μF(μF).
- ALL CAPACITORS ARE SHOWN IN THE FORM OF CAPACITANCE(μF)/RATED VOLTAGE (V).
- ALL INDUCTANCE VALUES ARE IN mH(mH).

MODEL XV-D9000

SHEET 6/10

Digital data signal

TO SHEET 7/10

TO SHEET 7/10

- SERV03
- SERV02
- SERV01
- FEP
- DRIVER
- POWER
- MECHA

7  
6  
5  
4  
3  
2  
1

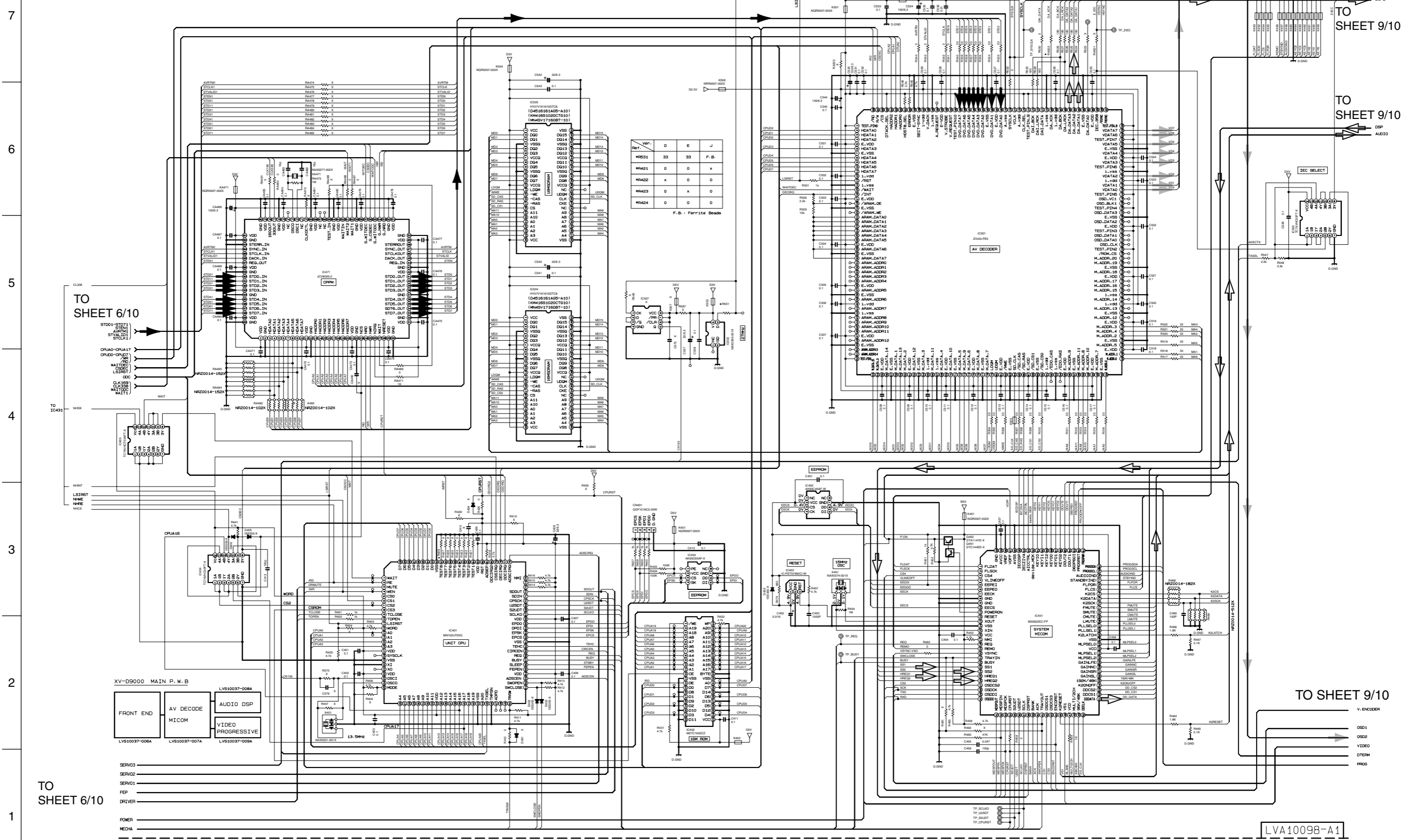
A B C D E F G H I J



AV Decoder and system controller section

TO CN801  
SHEET 2/10

TO FRONT  
TO SHEET 9/10  
TO SHEET 9/10

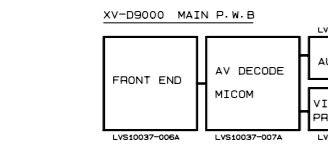


TO SHEET 6/10

TO IC431

LS1RST  
NHE  
NHC

CPU16



TO SHEET 6/10

SERV03  
SERV02  
SERV01  
FEP  
DRIVER  
PWER  
MEDIA

TO SHEET 9/10

V. ENCODER  
OSD1  
OSD2  
VIDEO  
OTHER  
PROG

LVA10098-A1

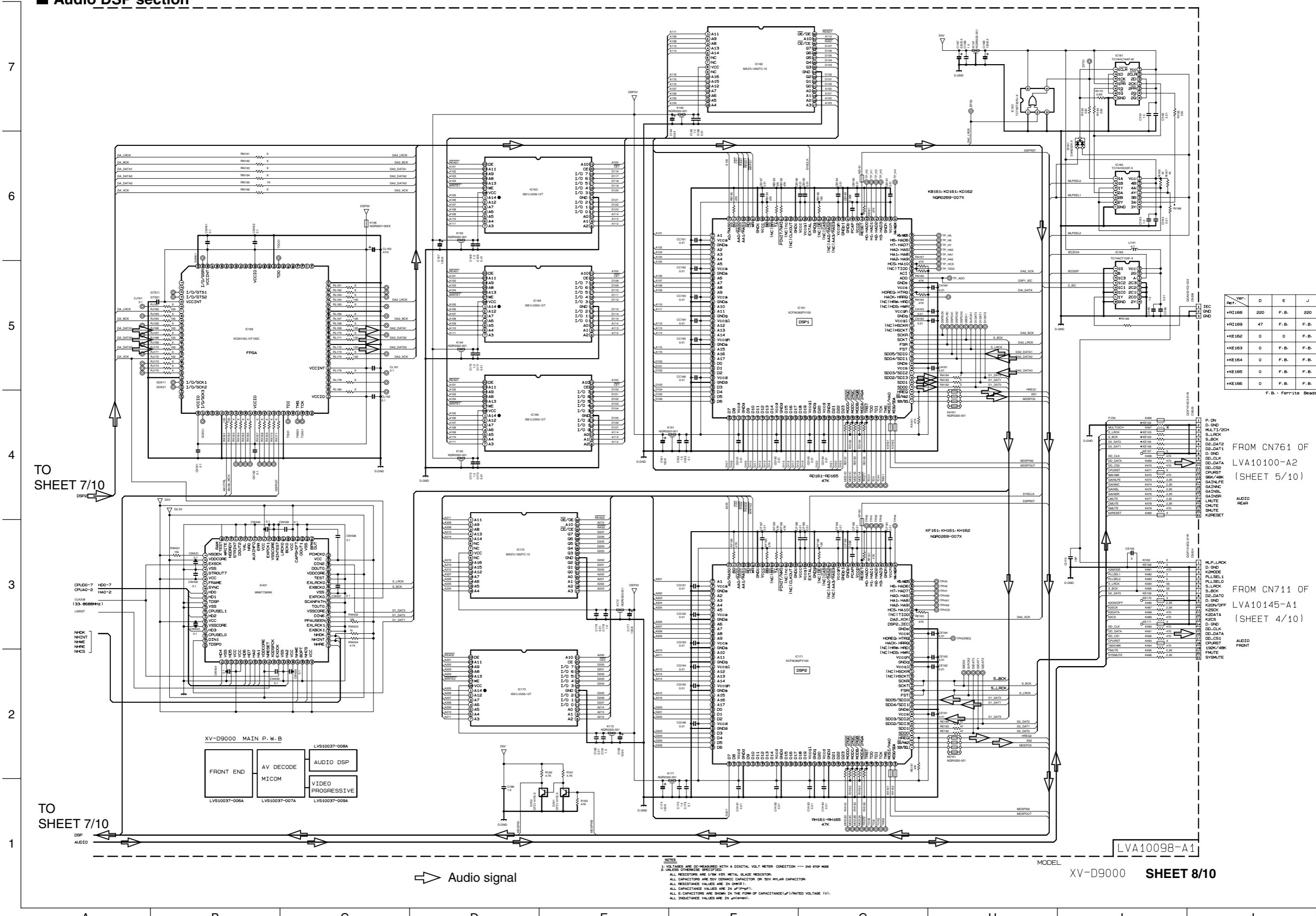
MODEL XV-D9000

SHEET 7/10

Digital data signal Audio signal Video signal

NOTES  
 1. VOLTAGES ARE DC-MEASURED WITH A DIGITAL VOLT METER  
 2. UNLESS OTHERWISE SPECIFIED  
 ALL RESISTORS ARE 1/8W 5% METAL GLAZE RESISTOR  
 ALL CAPACITORS ARE 50V 50%RH CAPACITOR UNLESS OTHERWISE SPECIFIED  
 ALL CAPACITANCE VALUES ARE IN pF UNLESS OTHERWISE SPECIFIED  
 ALL INDUCTANCE VALUES ARE IN mH UNLESS OTHERWISE SPECIFIED

Audio DSP section



| Ver.   | D   | E    | J    |
|--------|-----|------|------|
| *R1168 | 220 | F.B. | 220  |
| *R1169 | 47  | F.B. | F.B. |
| *R1170 | 0   | 0    | F.B. |
| *R1171 | 0   | F.B. | F.B. |
| *R1172 | 0   | F.B. | F.B. |
| *R1173 | 0   | F.B. | F.B. |

F.B.: Ferrite Beads

FROM CN761 OF  
LVA10100-A2  
(SHEET 5/10)

FROM CN711 OF  
LVA10145-A1  
(SHEET 4/10)

LVA10098-A1

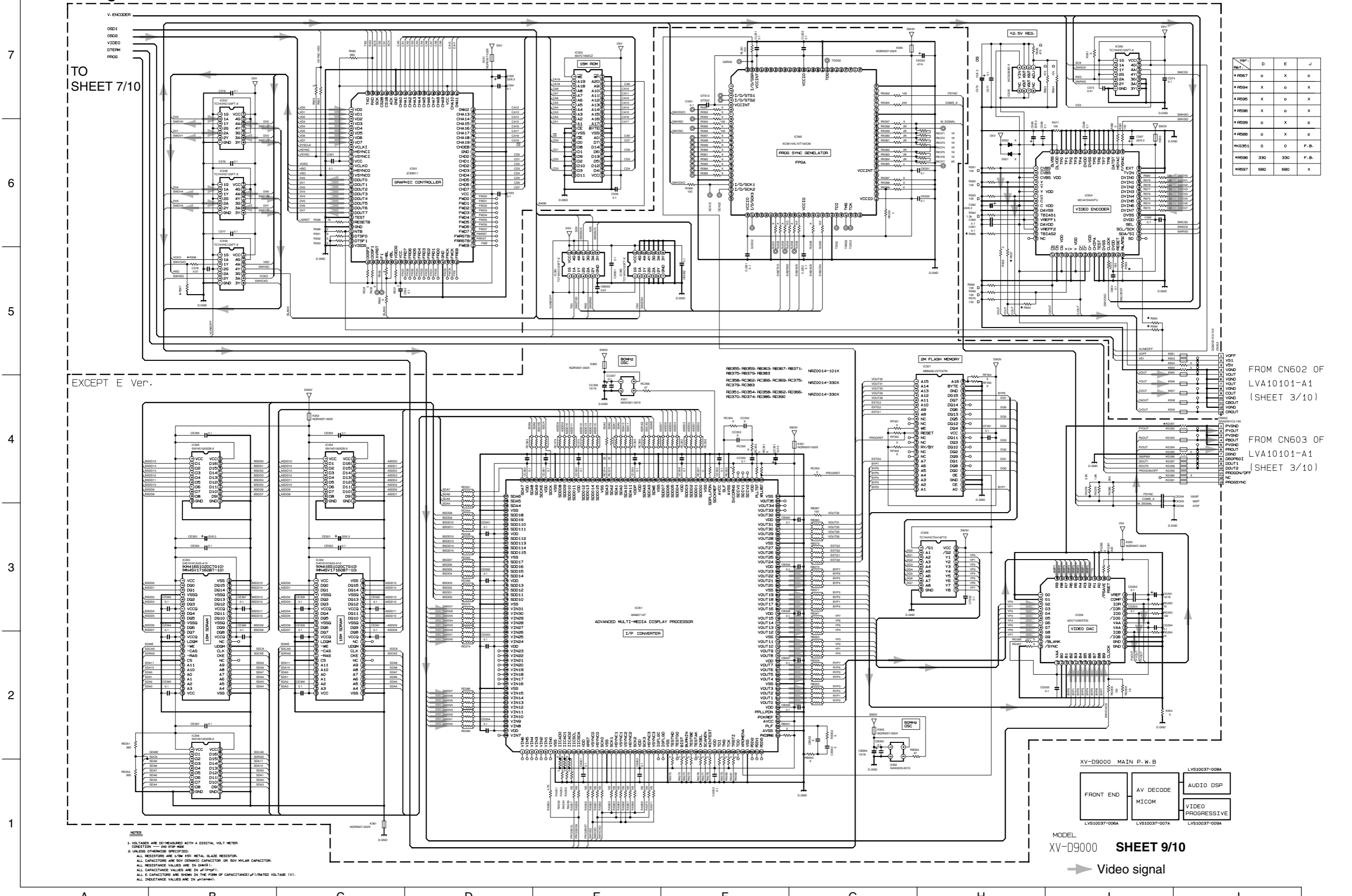
TO SHEET 7/10

TO SHEET 7/10

Audio signal

NOTES:  
1. VOLTAGES ARE DC-MEASURED WITH A DIGITAL VOLT METER CONDITION - DND STOP MODE  
2. UNLESS OTHERWISE SPECIFIED:  
ALL RESISTORS ARE 1/16W 5% METAL GLAZE RESISTOR.  
ALL CAPACITORS ARE 50V CERAMIC CAPACITOR OR 50V NYLON CAPACITOR.  
ALL RESISTANCE VALUES ARE IN OHMS (Ω).  
ALL CAPACITANCE VALUES ARE IN pF (pF).  
ALL CAPACITANCE VALUES ARE SHOWN IN THE FORM OF CAPACITANCE/(RATED VOLTAGE (V)).  
ALL INDUCTANCE VALUES ARE IN μH (μH).

Video signal section



TO SHEET 7/10

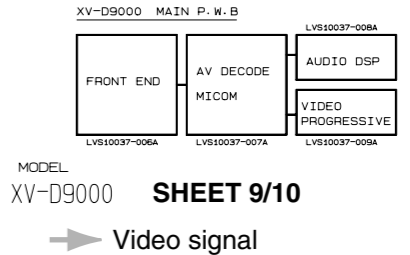
EXCEPT E Ver.

| REF. | D   | E   | J    |
|------|-----|-----|------|
| R567 | 0   | X   | 0    |
| R564 | X   | 0   | X    |
| R565 | X   | 0   | X    |
| R566 | X   | 0   | X    |
| R569 | 0   | X   | 0    |
| R568 | 0   | X   | 0    |
| R563 | 0   | 0   | F.B. |
| R566 | 330 | 330 | F.B. |
| R567 | 680 | 680 | X    |

FROM CN602 OF LVA10101-A1 (SHEET 3/10)

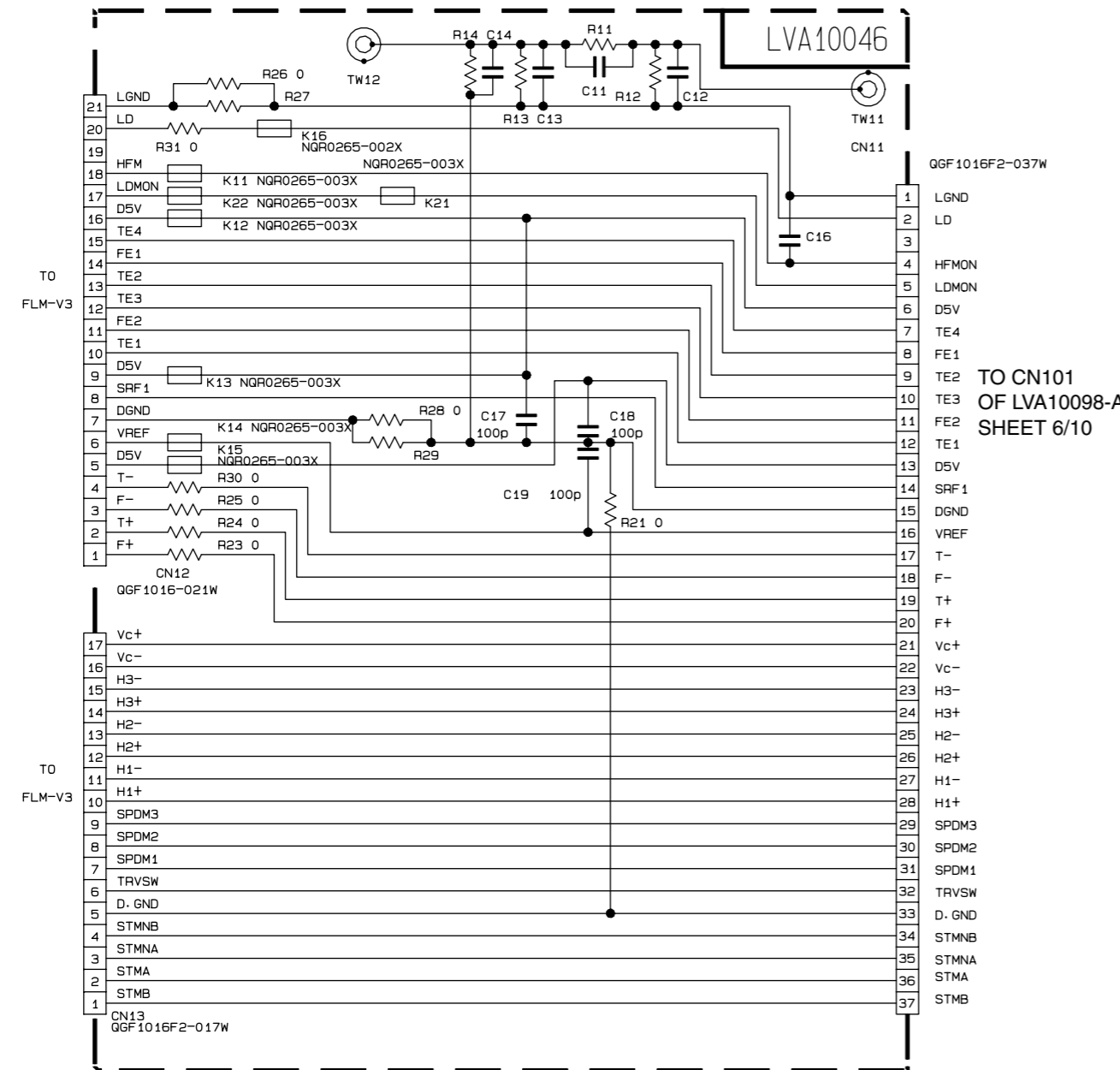
FROM CN603 OF LVA10101-A1 (SHEET 3/10)

- NOTES
- VOLTAGES ARE DC-MEASURED WITH A DIGITAL VOLT METER CONDITION — 50% DUTY CYCLE.
  - UNLESS OTHERWISE SPECIFIED, ALL RESISTORS ARE 1/4W 0805 METAL GLAZE RESISTOR.
  - ALL CAPACITORS ARE 50V CERAMIC CAPACITOR OR 50V MYLAR CAPACITOR.
  - ALL RESISTANCE VALUES ARE IN OHMS (Ω).
  - ALL CAPACITANCE VALUES ARE IN PICO-FARAD (pF).
  - ALL CAPACITORS ARE SHOWN IN THE FORM OF CAPACITANCE/1/RATED VOLTAGE (V).
  - ALL INDUCTANCE VALUES ARE IN MICROHENRY (μH).



MODEL XV-D9000 SHEET 9/10  
 Video signal

■ Connect section



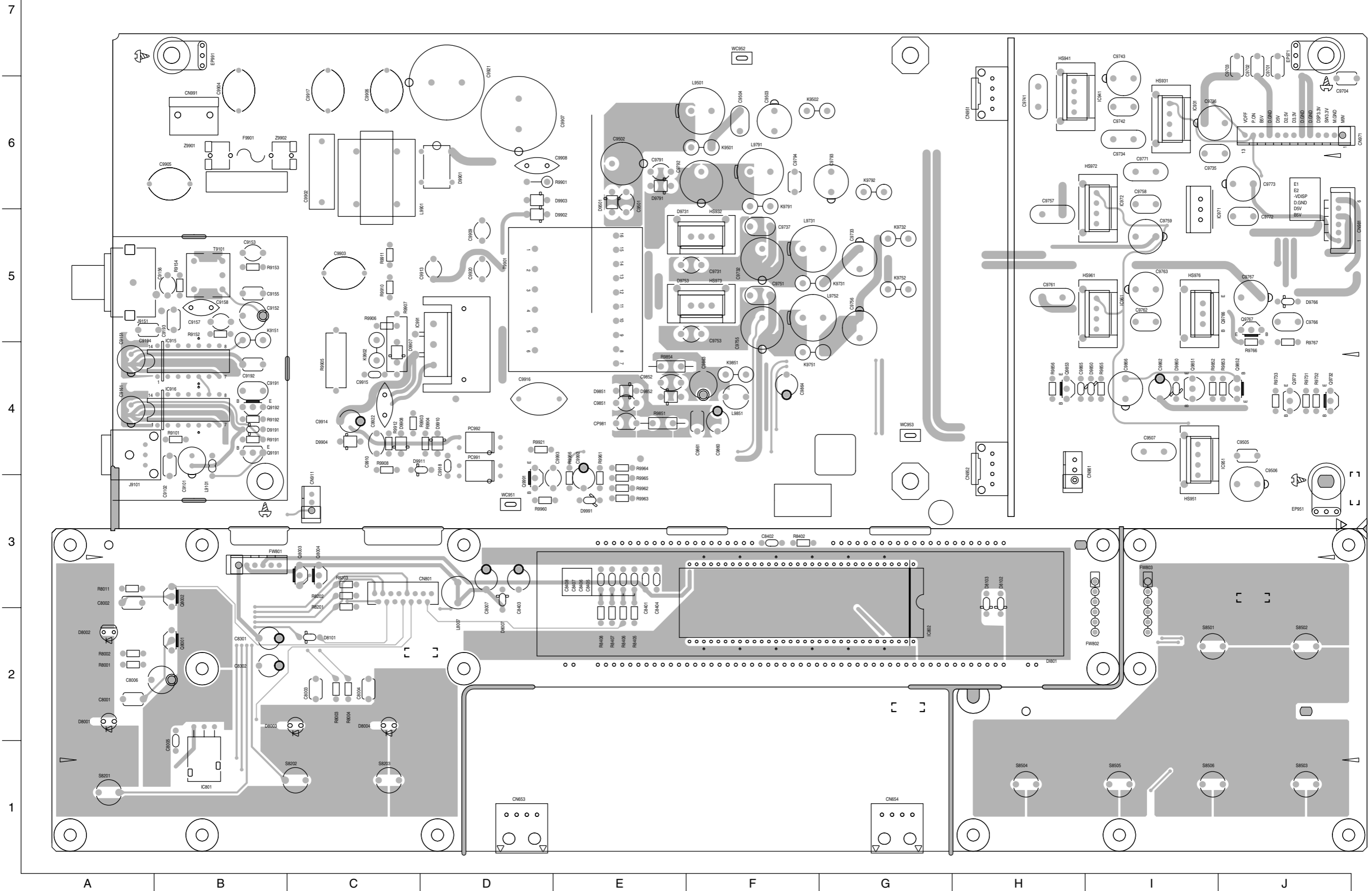
TO CN101  
OF LVA10098-A1  
SHEET 6/10

7  
6  
5  
4  
3  
2  
1

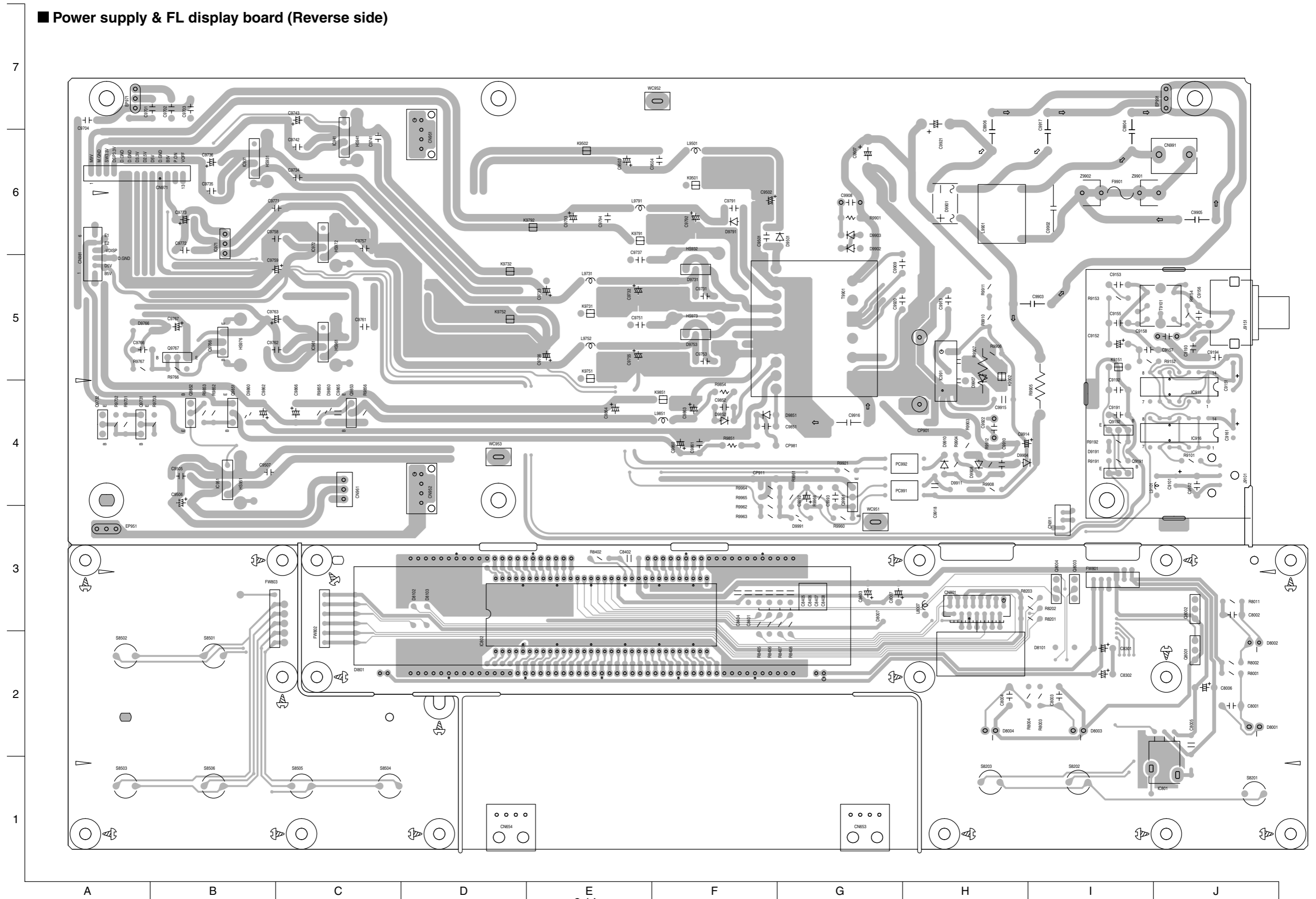
A B C D E 2-12 F G H I J

# Printed circuit boards

## ■ Power supply & FL display board (Forward side)



■ Power supply & FL display board (Reverse side)

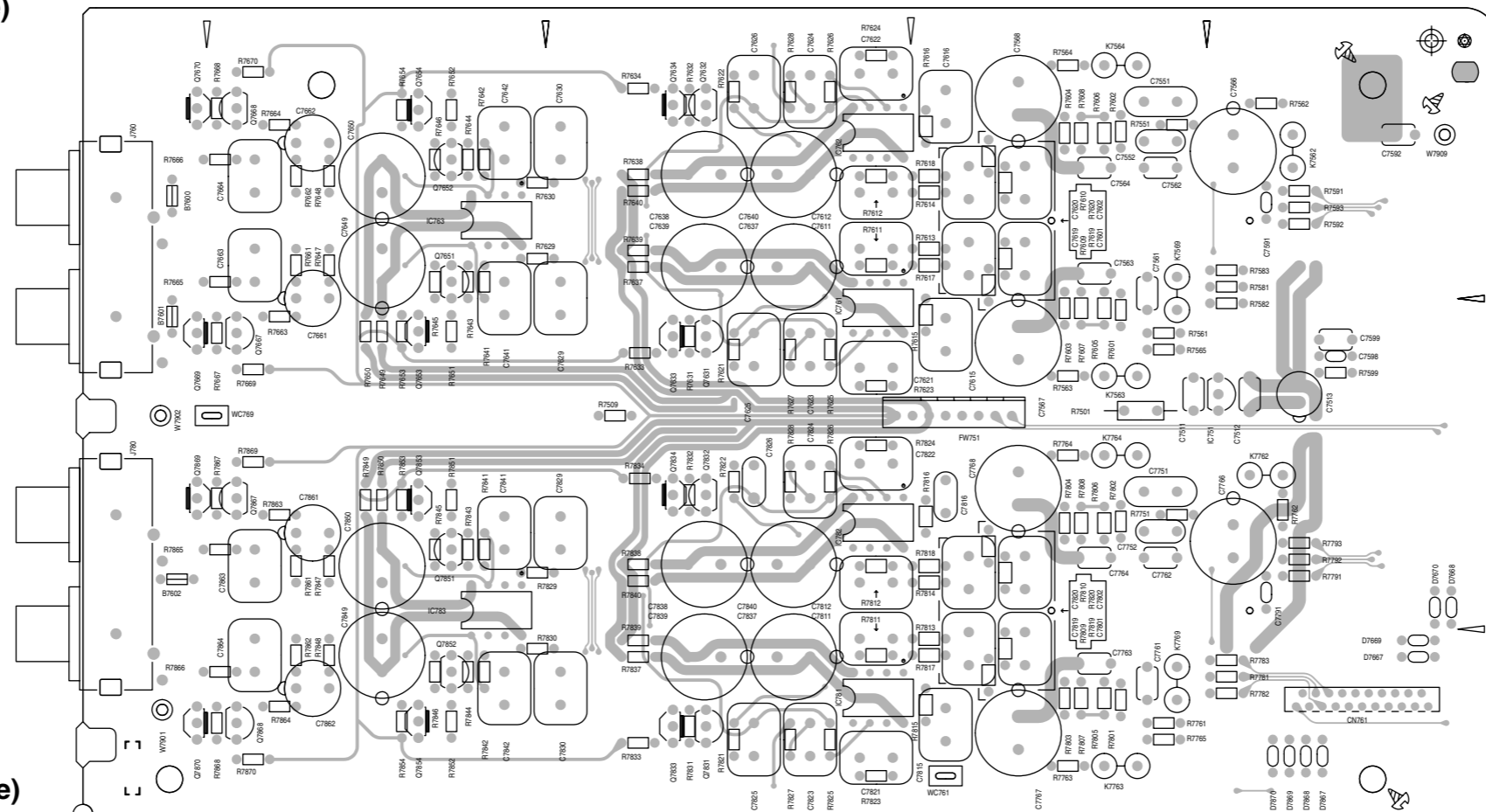




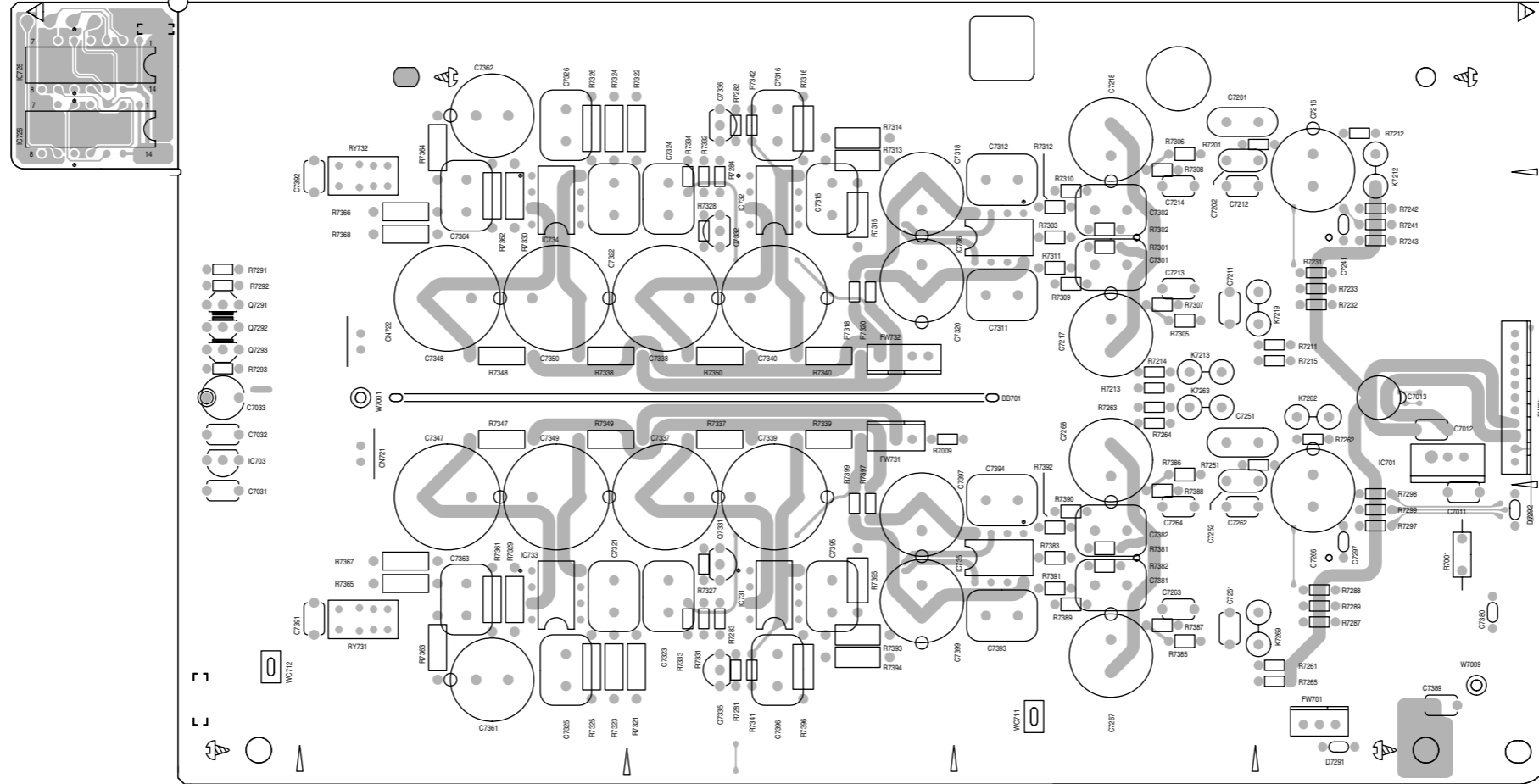




■ Audio-rear board (forward side)



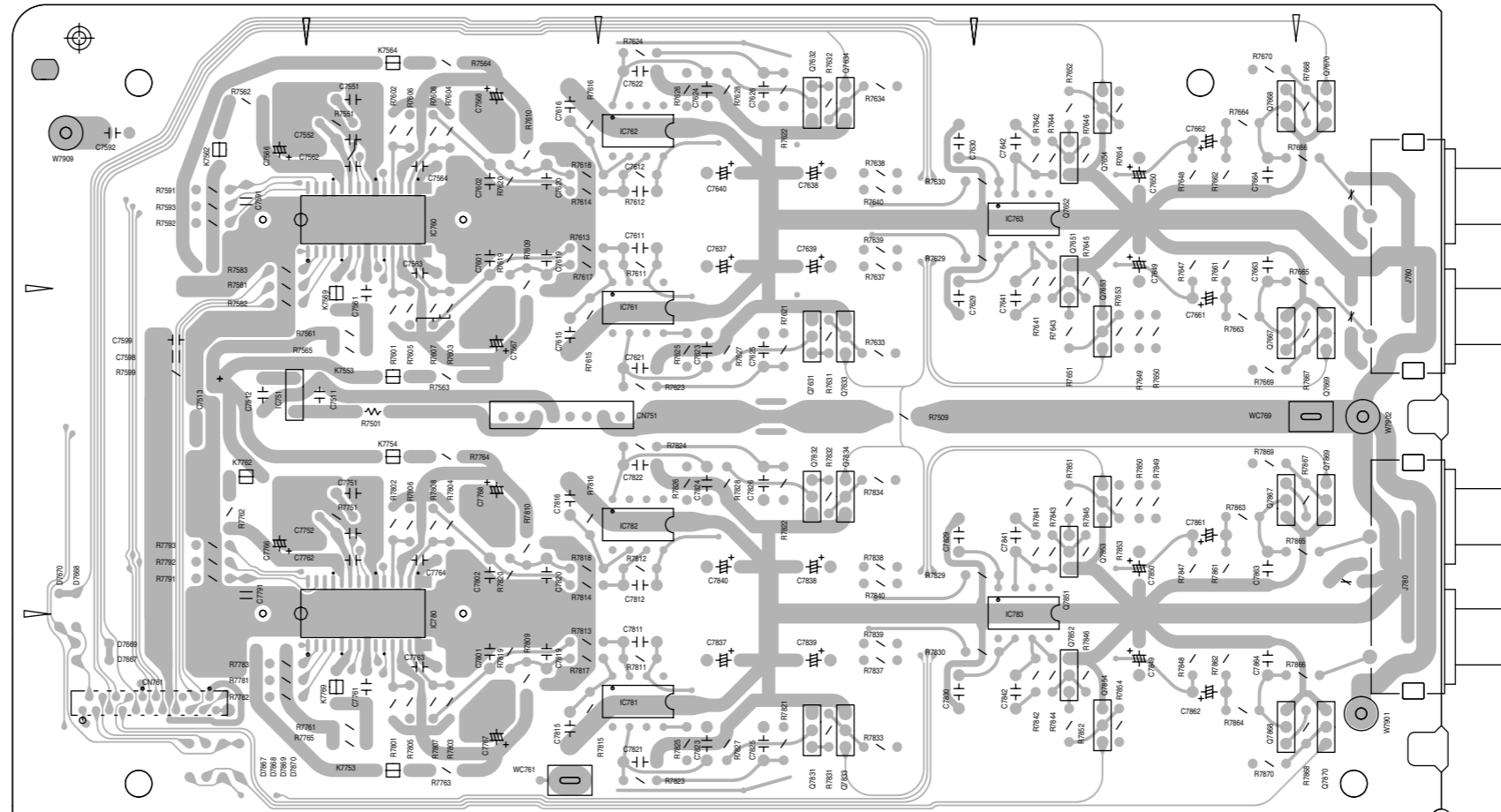
■ Audio-front board (forward side)



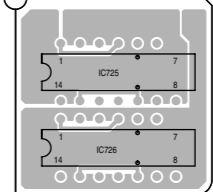
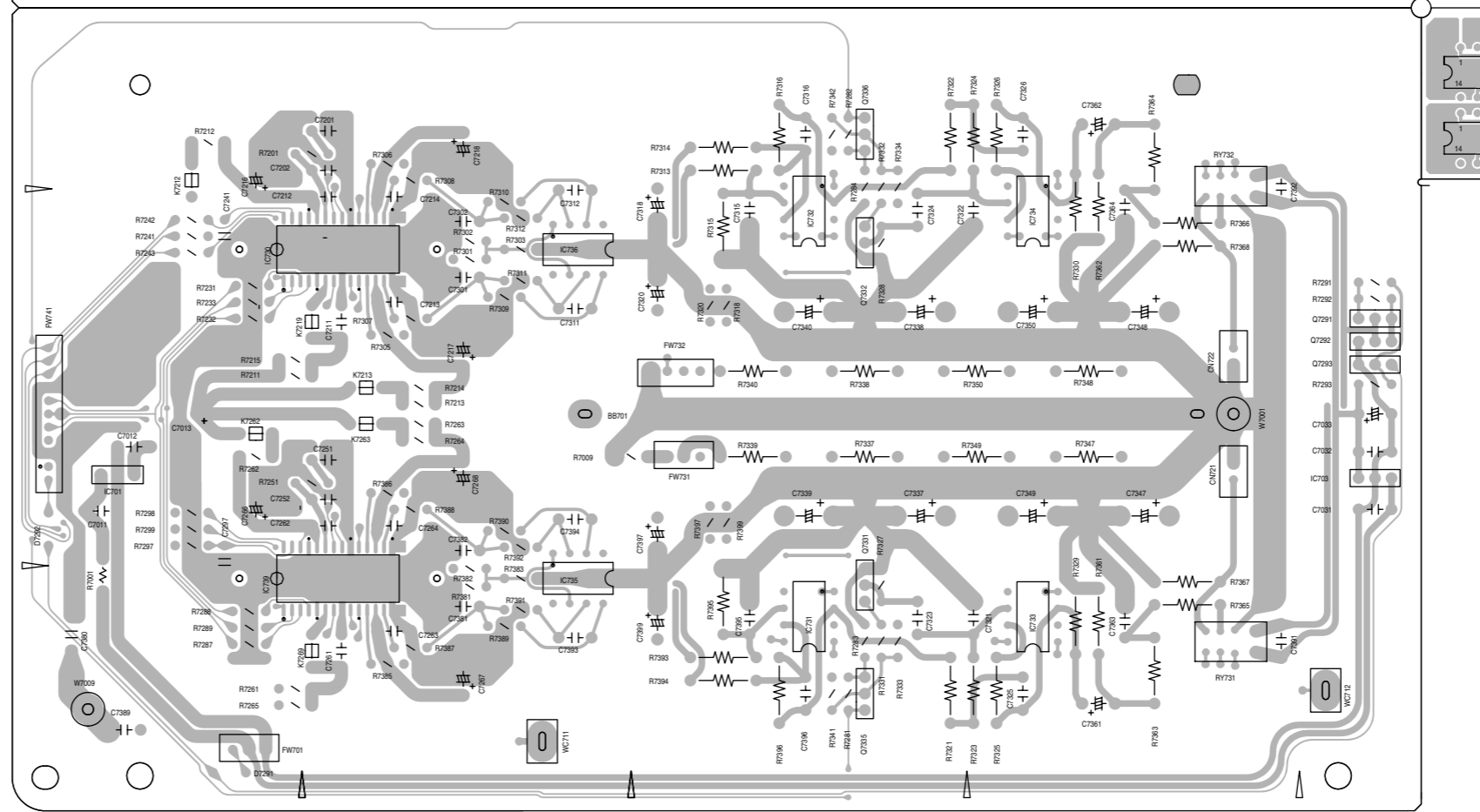
7  
6  
5  
4  
3  
2  
1

A B C D E F G H I J

■ Audio-rear board (reverse side)



■ Audio-front board (reverse side)



7

6

5

4

3

2

1

A

B

C

D

E

F

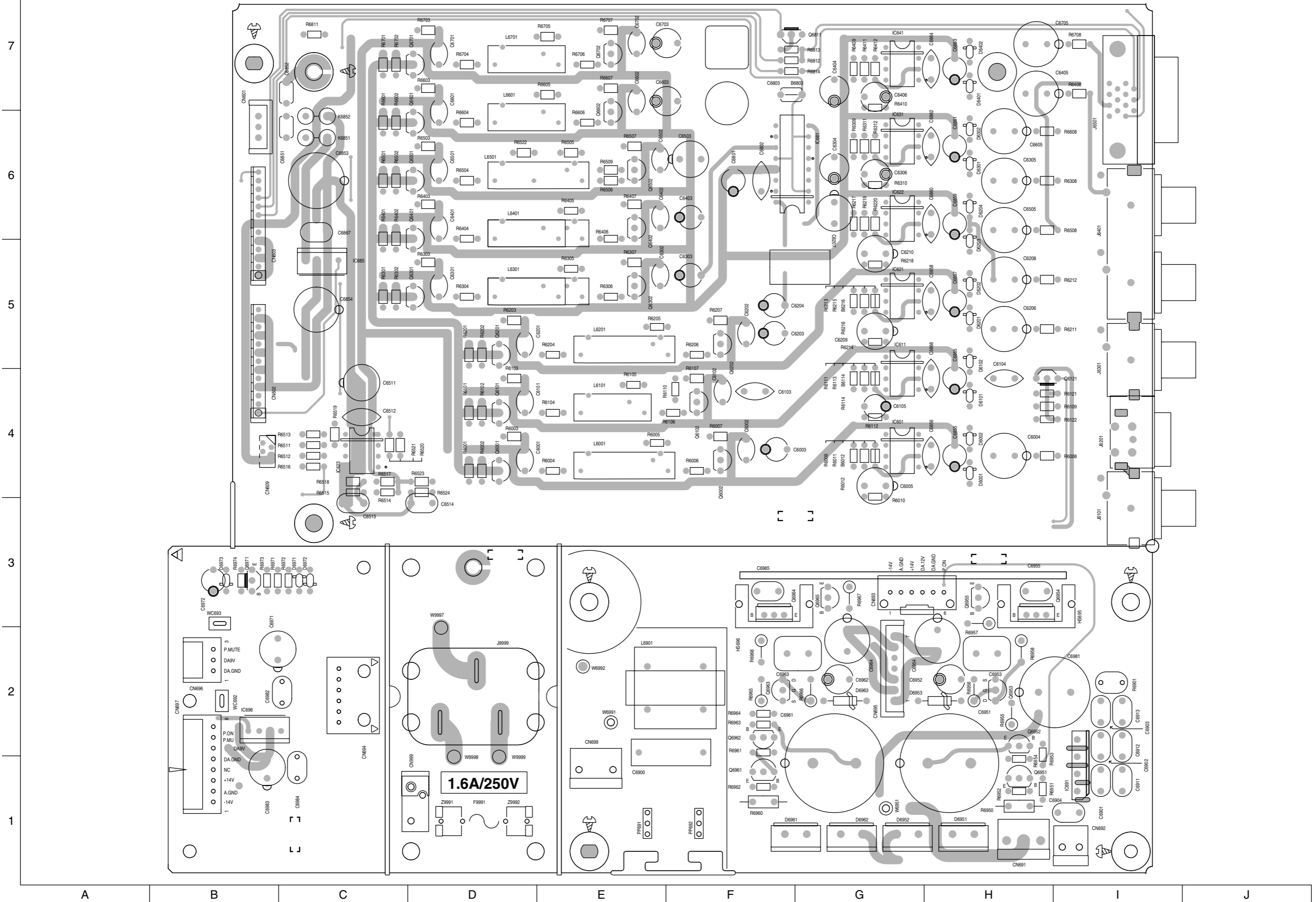
G

H

I

J

■ Video signal board (forward side)

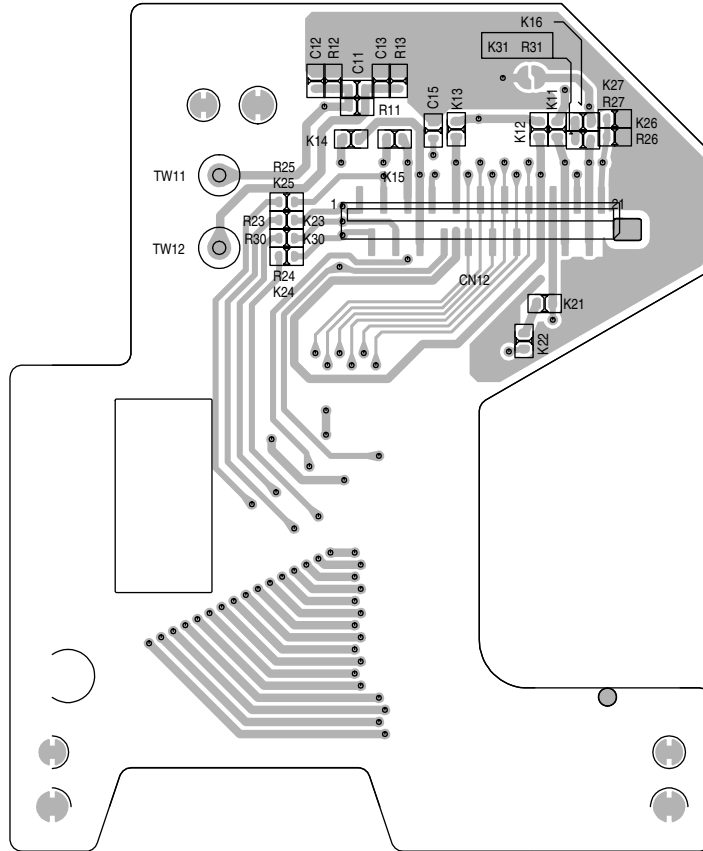






■ Mechanism board

(forward side)



(reverse side)

